



## MARINE AND INDUSTRIAL BUILDINGS

A COMMITMENT  
TO PEOPLE, EFFICIENCY,  
AND QUALITY

**AT EDG, WE TAKE PRIDE IN OUR DEDICATED TEAM OF PROFESSIONALS WHO SPECIALIZE IN BUILDING DESIGN. FROM FULLY OUTFITTED OFFSHORE LIVING QUARTERS TO ONSHORE INDUSTRIAL BUILDINGS, OUR EXPERTS ARE COMMITTED TO DELIVERING EXCELLENCE IN EVERY PROJECT.**

EDG's Marine & Industrial Group not only designs buildings, but has significant field experience in fabrication, transportation, installation, hookup, and commissioning. Our diverse onshore and offshore project experience enables us to determine the most efficient and cost-effective strategy for successful project development. We can provide design expertise to our clients independently or in conjunction with EDG's full suite of project management and engineering capabilities. We will tailor a work structure that fits your project needs.

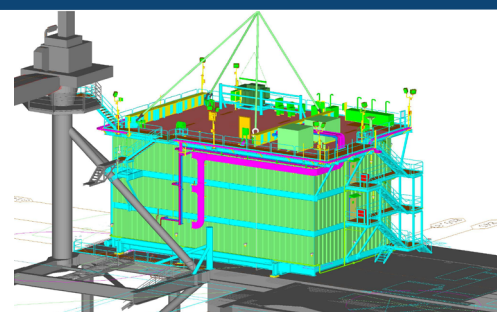
## SERVICES AND CAPABILITIES

### ENGINEERING SERVICES

- Structural
- Architectural
- Electrical
- Fire & Gas
- HSE (Blast)
- 2D & 3D Modeling
- USCG / ABS

### PROJECT SUPPORT SERVICES

- Project Management
- Construction Management
- Project Controls
- Inspection
- Commissioning



## PROJECT EXAMPLES

### MARATHON EG PRODUCTION, LTD. MAINTENANCE WORKSHOP AND OFFICES

MALABO, EQUATORIAL GUINEA

EDG design scope includes site layout, drainage, workshop foundation, architectural floor plan, roadway, accessibility / security, and all utilities for a new 23,000 sq. ft. workshop and two (2) 4,000 sq. ft. office buildings.

### MAFUMEIRA SUL PROJECT OFFSHORE MAINTENANCE BUILDINGS

REPUBLIC OF ANGOLA

EDG designed three (3) maintenance buildings to be located in the Central Processing Complex, Block "O", offshore Cabinda Province. Design included workshop and laboratory building, storage, and work control building.

The Workshop and Laboratory Building (WLB) is a 2-story, all steel building, measuring 57'-0" x 31'-0" x 21'-0" tall. The Storage and Work Control Building (WCB) is a 2-story, all-steel building measuring 21'-0" x 31'-0" x 25'-4" high, and the Operations Storage Building (OSB) is a 1-story, all-steel building, measuring 16'-0" x 21'-0" x 11'-3" tall.

### SHELL MARS "A" LIVING QUARTERS

GULF OF MEXICO

EDG performed turnkey design of a 40'x72', 3-story, 76-bed auxiliary living quarters capable of supporting a Seatrax S230P "Bullfrog" crane on the roof. The quarters are designed for a single-point lift and capable of withstanding a blast of 0.65bar. EDG worked extensively with the offshore hook-up team during the design phase resulting in the living quarters being online within 36 hours of installation.

### MURPHY KINGS QUAY PROJECT LIVING QUARTERS, ELECTRICAL AND WORKSHOP BUILDINGS

GULF OF MEXICO

EDG performed turnkey design including all structural, architectural, mechanical, electrical, and plumbing disciplines for the building packages on the King's Quay FPS. These buildings consist of a 50-POB 2-story living quarters with helideck, a 2-story electrical / control building, an emergency electrical building, a medium voltage electrical building, and a workshop building."



To learn more about how EDG's Marine and Industrial Building Group Services and Capabilities, please contact us:

#### CONTACT

**MICHAEL WALSDORF**

Marine & Industrial Group

 **504.934.2167**

 **mswalsdorf@edg.net**

 **@EDG**  **@EDGInc**