

The difference is
EXCELLENCE

SAFETY SYSTEMS ■ CONTROL SYSTEMS ■ INSTRUMENTATION ■ AUTOMATION

The Instrumentation & Control Systems Group at EDG is responsible for the design of instrumentation, controls and safety systems for onshore and offshore facilities.

Our professional engineers and designers are well equipped to handle your measurement and control needs. Our control engineers are experienced in PLC and DCS applications associated with onshore and offshore projects. Our safety systems team is committed to excellence and to reducing your process risk to an acceptable level.



Instrumentation

Primary and final element sizing, specification and selection, electrical pneumatic and hydraulic systems



Controls Systems

Process control systems, alarm management, shutdown systems, control rooms, control panels



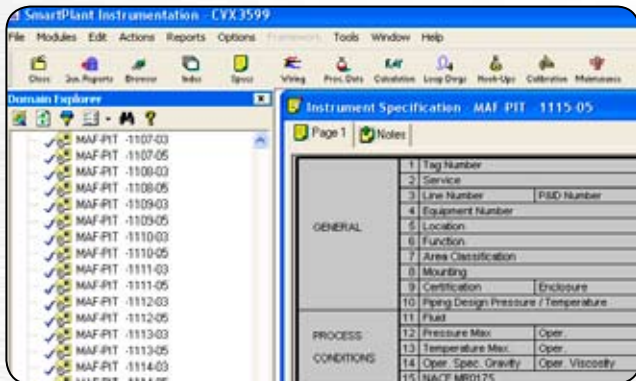
Safety Systems

API RP-14C, ANSI/ISA 84.00.01, IEC 61511, design, SIL assessment and verification, fire and gas systems



Automation

PLC & DCS programming and configuration, control panels, SCADA systems, control system configuration and programming, HMI configuration



Give the Edge to EDG



Instrumentation Team

Reliable control starts with proper selection of sensors and final elements. Environmental conditions outside the process and internal conditions within the process must be properly understood before instruments are specified. Consideration of metallurgy, process pressure/temperature/flow ratings, speed of response, reliability, accuracy, repeatability, economics and many other things are required to select instruments properly. Our instrumentation engineers focus on the specification and installation of electrical, hydraulic and pneumatic instrumented systems in both unclassified and hazardous locations. Closely tied to control systems engineering efforts, instrumentation engineering provides the proper balance of measurement and controls to precisely manage and monitor your facilities. At EDG, we use Intools to manage our instrument deliverables. This gives us the ability to interface seamlessly with your plant's instrumentation database.

Control System Team

Good control translates to smooth operation even under the most hostile applications, and smooth operations lead to higher process uptime, better process efficiency and a safer experience. Our control engineers work closely with our facility engineers in the development of P&IDs, control narratives, logic diagrams and cause-and-effect diagrams. They can implement the latest requirements to manage your alarms and are experts when it comes to telecommunications. They also work closely with our automation team to ensure programming and HMI requirements meet client expectations and to ensure that panels are correctly designed.

Safety System Team

Process risk has long been an undesirable by-product of onshore and offshore facility operations. When you entrust your safety system design responsibility to EDG, you get a "commitment to excellence" and the promise that we will help you reduce your risks to an acceptable level. We can make this promise because our standard offshore process begins with the application of API RP14C to create an initial safety system design. Onshore, we analyze the process risks and assess SIL requirements using PHA Pro7 software and requirements found in ANSI/ISA 84.00.01 (US counterpart to IEC-61511). Then, we continue the design using 84.00.01 and perform SIL verification using ExSILentia software. For added value, we have a process called SILPAX. It combines the excellent safety record of 14C with the up-to-date advantages of the safety life cycle in 84.00.01. For more information on the SILPAX process, go to www.edg.net/silpax.

Automation Team

Automation engineering integrates the work of our instrument team, our controls team and our safety team. They do the programming and configuration necessary to make efficient use of control system architecture and HMI real estate. They also know how to interface with your LAN equipment and are experts who can assist you with HMI, DCS and PLC programming such as Allen Bradley, General Electric, Wonderware, Delta V or other popular hardware and software providers. They are also official Fisher-Rosemount Delta-V integrators. Whether you need a new automation system or simply need to revamp an existing one, our automation team can help you implement solutions that add value.

EDG, Inc., is a full-service, multinational consulting firm with offices in the United States, Luanda, Angola and expanding international locations such as Ho Chi Minh City, Vietnam. Established in 1982, EDG has completed more than 6,000 successful engineering projects for a prestigious, worldwide client list. EDG serves all segments of the oil and gas industry, as well as various industrial market segments, such as marine terminals and liquid/bulk material-handling facilities. More than 500 engineering professionals are currently working to provide the full range of services that include front-end engineering and design, overall project strategy and management, complete procurement services, construction management, inspection, training, startup and operations.

Houston

10777 Westheimer
Suite 700
Houston, Texas 77042
Phone 888-EDG-9298
Phone 713.977.2347
FAX 713.977.2387

New Orleans

3900 N. Causeway Blvd.
Suite 700
Metairie, Louisiana 70002
Phone 504.455.0858
FAX 504.455.0868

Lafayette

1819 West Pinhook Rd.
Suite 101
Lafayette, Louisiana 70508
Phone 337.269.5900
FAX 337.269.5999

Columbus

53 Dorchester Square Ln.
Suite B
Westerville, Ohio 43081
Phone 614.891.9920
FAX 614.891.9466

Luanda

EDG Projectos Angola, Lda.
Rua Do Robert Shields #8
Luanda, Angola
Phone 011.244.222.396308
Phone 011.244.222.396353
FAX 011.244.222.394347

Vietnam

33 Mac Dinh Chi Street
Ward DaKao, District 1
Ho Chi Minh City, Vietnam

India

34, Aundh Road
Bhau Patil Marg, Pune 411020
Phone (+91) 20 2551 3877

Give the Edge to EDG



EDG.NET